

Nel Thames, Stamp with Nel

<https://StampWithNel.com>

nel@stampwithnel.com

Stampin' Up! Using Retiring DSP - Dahlia Fold



Creating a Dahlia Fold with a 2" circle punch.

Link to original post: <https://wp.me/pfbmkK-1bR>

Supplies needed:



Layering Leaves

Photopolymer Stamp Set

(English)

[161277]

\$24.00



Earthen Elegance 12" X 12"

(30.5 X 30.5 Cm) Designer

Series Paper

[161503]

\$12.50



Basic White 8 1/2" X 11"

Cardstock

[159276]

\$10.50



Copper Clay 8 1/2" X 11"

Cardstock

[161721]

\$10.00



Moody Mauve 8 1/2" X 11"

Cardstock

[161723]

\$10.00



Pretty Peacock 8-1/2" X 11"

Cardstock

[150880]

\$10.00



Basic White Medium

Envelopes

[159236]

\$8.50



Copper Clay Classic Stampin'

Pad

[161647]

\$9.00



2" (5.1 Cm) Circle Punch

[133782]

\$22.00



2023-2025 In Color™ Dots

[161620]

\$8.00



Stampin' Seal

[152813]

\$8.00



Multipurpose Liquid Glue

[110755]

\$5.50



Stampin' Dimensionals

[104430]

\$4.25



Paper Snips

[103579]

\$11.00



Stampin' Cut & Emboss

Machine

[149653]

\$128.00



Bone Folder

[102300]

\$7.00



Clear Block D

[118485]

\$9.50



Paper Trimmer

[152392]

\$26.00

Project Recipe:



1. Original Blog Post

2. Cutting Instructions:

Basic White

4" x 5-1/4" inside sentiment panel

Copper Clay

4-1/4" x 11" scored at 5-1/2" for cardbase

Moody Mauve

4" x 5-1/4" for front panel

Earthen Elegance DSP

2" circles (9 pcs)

5/8" x 3-1/4" for sentiment

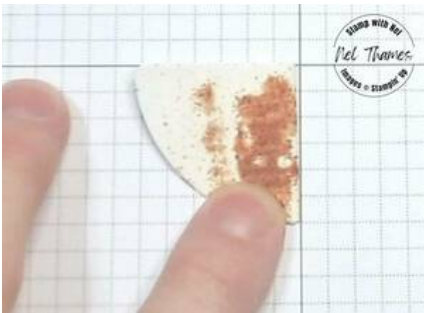
3/8" x 4" for inside panel

2-1/4" x 6" for envelope flap

Pretty Peacock

5/8" x 3-1/4" under sentiment

3. Use the 2" circle punch to punch 9 circles from designer series paper. This technique does not work with cardstock because it is too stiff.



4. Fold one circle in half and use a bone folder to crease the paper.

Fold the circle in half again and use the bone folder to create the paper again.



5. With the preferred side on the inside of the folded circle (in the example it's the multicolored lined side of the DSP), fold one curved edge up towards the center of the 1/4 circle.



6. Turn the quarter circle to the other side and fold that curve up towards the center of the quarter circle.

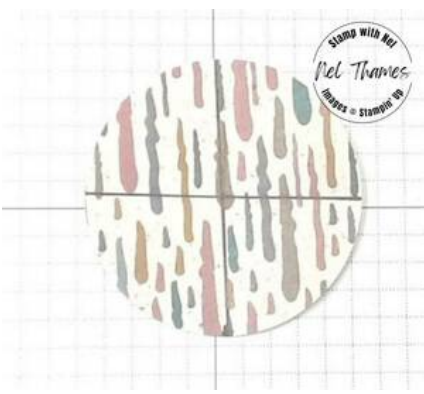


7. Open the circle with the small folded edges towards the table. Fold one of the quarter folds towards the center fold and crease with a bone folder.



8. Fold the other quarter fold towards the center line to meet with the first. Crease with a bone folder.

This is one petal of the dahlia. Make seven (7) more of these petals.



9. Fold the 9th circle in half twice like the others, but then open it and mark the lines with a marker. This will not show when the final product is complete. It will help you to assemble the flower to have the lines dark.



10. It's best to use Seal for the center circle, so cover it well with Seal. Do not push to adhere the petals during placement as you might need to adjust them.

Lay the first petal using the center line as a guide and place the point at the center of the circle.

Add the second petal opposite the first.



11. Add the third and fourth petals on the horizontal middle line, meeting in the center. Do not press to adhere yet.



12. Slide the remaining four petals into the available openings and adjust the petals so they are snug in the center and that the edges are touching, but not overlapping.

Once you're satisfied with placement, now you can press the petals onto the Seal. Add a Copper Clay 2023-2025 In Color Dot in the center of the flower.

13. Emboss the Moody Mauve panel with the Dotted Circles 3D Embossing Folder (available May 1) using the Stampin' Cut and Embossing Machine.

14. Adhere the flower to the front of the Moody Mauve panel with adhesive.

15. Stamp the Layering Leaves sentiment on a piece of Earthen Elegance Designer Series Paper and trim with a paper trimmer.

16. Trim the banner edges by cutting a small slit in the center of the right end, then cut from the left corner to the center and from the right corner to the center.

Do the same to create the banner tails on the other side.

| | |
|--|---|
| | <p>17. Adhere the sentiment to a piece of Pretty Peacock card stock with adhesive.</p> <p>Adhere the sentiment to the front panel under the Dahlia Fold.</p> <p>Using Stampin' Dimensionals adhere the front panel to the Copper Clay card base.</p> |
| | <p>18. Add a strip of DSP to the inside sentiment panel with adhesive.</p> <p>Adhere the sentiment panel to the card base with your favorite adhesive.</p> |
| | <p>19. Add DSP to the envelope flap with adhesive and trim with paper snips.</p> |
| | <p>20. Stamp a Layering Leaves sprig on the front of the envelope using Copper Clay ink.</p> |
| | <p>21. Here's where you can find me:</p> <p>Stamp with Nel blog: https://stampwithnel.com Instagram: www.instagram.com/stampwithnel/ Facebook: www.facebook.com/stampwithnel/ Pinterest: www.pinterest.com/stampwithnel/ YouTube: www.youtube.com/@StampWithNel</p> <p>I typically post card blogs on Sunday, Tuesday and Thursday and email a newsletter on Wednesdays. I'd be honored if you'd subscribe to my blog to receive an update when a new blog is posted and to receive my weekly newsletter. My blog is found at https://stampwithnel.com.</p> <p>Join me for a free live cardmaking class every Sunday at 6 pm central. You may view the class live on Facebook or YouTube. You can find my Facebook page here and the Stamp With Nel YouTube channel (@stampwithnel) here. I invite you to join me for the class or watch it on the replay.</p> |