



Stampin' Up!® Magical Meadow Bundle Mini Pocket Envelope Card - Gift Card in a Card Box

Cutting Instructions:

Basic White

5-1/4" x 4" for inside layer

Balmy Blue

10" x 8-1/2" scored as directed

1" x 11" for belly band

2-1/2" x 2-1/2" for Deckled Circle die cut

Real Red

3-1/2 x 1-1/2" for berries and small foliage die cut

Night of Navy

7" x 3-3/4 for die cuts

Winter Meadow DSP

5-1/4" x 4-1/2" for die cut

More Dazzle 6 x 6 Specialty DSP

2-1/4" x 6" for envelope flap

2-3/4" x 3-1/2" for Mini Pocket Envelope front

2-1/2" x 2-1/2" for Mini Pocket Envelope insert

1-3/4" x 5-1/4" for box top flap

1-1/4" x 5-1/4" for box outside

Instructions

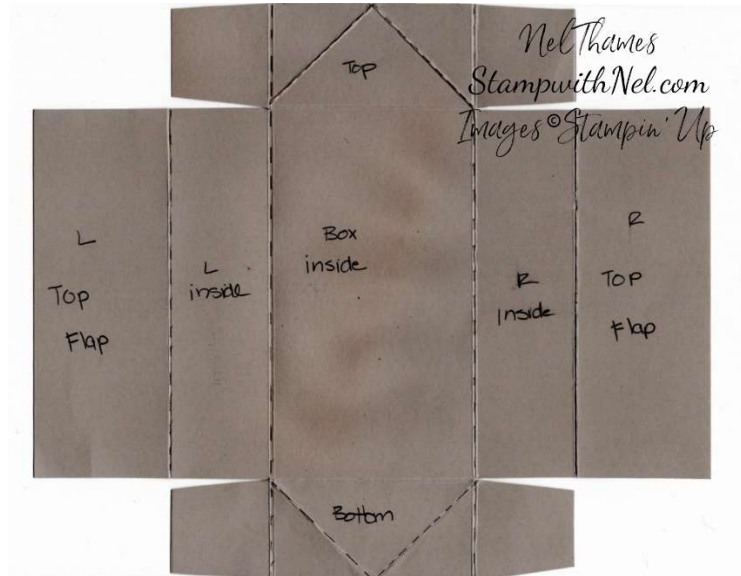
1. Use the Stampin' Cut & Emboss machine to die cut:
 - a. Berries – Real Red
 - b. 5th largest deckled circle – Night of Navy
 - c. 4th largest deckled circle – Balmy blue
 - d. Large foliage with berries – Night of Navy
 - e. Smaller foliage – one each of Balmy Blue, Real Red, Night of Navy
 - f. Mini Pocket Envelope – Any DSP

All stamped images © Stampin' Up!

All content © Nel Thames
StampwithNel.com
[Shop Online](#) | [Email](#)

- g. Mini Pocket Envelope decorative insert and front – More Dazzle DSP
2. Emboss the Night of Navy Deckled Circle with the Snowflake Sky 3D Embossing Folder.
 3. Emboss half of the Balmy Blue belly band strip with the Snowflake Sky 3D Embossing Folder, then move the folder to emboss the other half.
 4. Using the Simply Scored Board and with the 10" side at the top, score the Balmy Blue box piece at 2", 3-1/2, 6-1/2" and 8".
 5. Turn the Balmy Blue cardstock so the 8-1/2" side is at the top and score at 1-1/2" and 7".
 6. Cut on the 1-1/2" score line to the 2nd line. Trim off the rectangle, leaving a 1-1/2" x 1-1/2" tab in all four corners.
 7. Trim the edges of the tabs as shown in the diagram.
 8. Mark the center of the 3" rectangle at the top and bottom of the box.
 9. Score with the Simply Scored Board from the center diagonally to the bottom right edge of the 3" rectangle.
 10. Repeat the scoring from the center of the top to the left bottom edge. The top center should now fold in towards the box.
 11. Repeat the same scoring on the bottom center rectangle.
 12. Apply the 1-3/4" x 5-1/4" More Dazzle Specialty DSP to the right and left top flap.
 13. Using the Very Best Trio Punch, punch a decorative corner at the four corners of the two top flaps.
 14. Adhere two pieces of Tear & Tape to each tab. Burnish with a bone folder.
 15. Remove the cover from the Tear & Tape on one tab and adhere the corner to the outside box side. Repeat for all tabs.
 16. With liquid glue, adhere the 1-1/4" x 5-1/4" More Dazzle DSP to the side of the assembled box.
 17. Make the Mini Pocket Envelope from any DSP by folding the tabs to the inside and gluing the back to the tabs.
 18. Cut the tab pieces off the decorative More Dazzle DSP front of the Mini Pocket Envelope and adhere the front to the assembled Mini Pocket Envelope.
 19. Trim the edges of the decorative More Dazzle DSP pack insert if needed.
 20. Apply liquid glue to the back of the insert and slide it inside the Mini Pocket Envelope aligning the top edges.
 21. Apply Stampin' Seal+ or Tear & Tape to the back side of the gift card envelope and adhere to the inside of the box.
 22. Close the card and burnish from the back side.
 23. Wrap the Balmy Blue embossed belly band around the card with the edges in the front.
 24. Make sure the belly band slides easily but isn't too tight or too loose.
 25. Adhere the belly band with liquid glue allowing a 1" overlap.
 26. With a blending brush, lightly blend white ink onto the embossed Night Of Navy deckled circle to highlight the snowflakes and snow. Set aside to dry.
 27. Stamp the sentiment on the Balmy Blue deckled circle with Real Red ink.
 28. With Stampin' Dimensionals, adhere the Balmy Blue deckled circle to the Night of Navy deckled circle.
 29. Adhere the Real Red berries to the larger Night of Navy foliage with liquid glue.
 30. Addition the placement of the large foliage with the berries plus the three smaller foliage pieces, then glue them to each other and to the Night of Navy deckled circle, adhering them under the Balmy Blue deckled circle. Make sure they do not extend beyond the edges of the card so they will fit in the envelope.
 31. Adhere the assembled focal point to the belly band with liquid glue covering the overlapping edges.

32. Adhere the More Dazzle paper to the envelope flap with liquid glue. Trim with paper snips.
33. With Balmy Blue ink, stamp the three lines from Of Art & Texture stamp set on the front left bottom of the envelope.
34. With the Real Red Stampin' Write Marker, color the large berries on the Magical Meadow stamp cling stamp.
35. With a Garden Green Stampin' Write Marker, color the leaves of the berries.
36. Huff on the stamp twice with your breath to reactivate the ink, then stamp over the previously stamped lines.



Original Blog Post: StampWithNel.com

YouTube Video Tutorial: <https://youtu.be/SD9816n-j4c>

Please Subscribe to my YouTube channel and set your notifications to "all" so you receive notification every time a new video is posted.

Please follow me on Social Media:

www.facebook.com/StampWithNel/
www.instagram.com/StampWithNel/
www.pinterest.com/StampWithNel/

All stamped images © Stampin' Up!

All content © Nel Thames
StampwithNel.com
[Shop Online](#) | [Email](#)

Supplies

- Joy Of Noel Photopolymer Stamp Set (English) [161959] - Price: \$24.00 - <http://msb.im/22K9>
- Magical Meadow Bundle (English) [162144] - Price: \$57.50 - <http://msb.im/22KA>
- Mini Pocket Envelope Dies [159167] - Price: \$29.00 - <http://msb.im/22KB>
- Deckled Circles Dies [162286] - Price: \$37.00 - <http://msb.im/22KC>
- Snowflake Sky 3D Embossing Folder [162026] - Price: \$11.00 - <http://msb.im/22KD>
- Real Red Classic Stampin' Pad [147084] - Price: \$9.00 - <http://msb.im/22KE>
- Uninked Stampin' Pad & Whisper White Refill [147277] - Price: \$10.50 - <http://msb.im/22KF>
- Balmy Blue 8-1/2" X 11" Cardstock [146982] - Price: \$10.00 - <http://msb.im/22KG>
- Basic White 8-1/2" X 11" Cardstock [159276] - Price: \$10.50 - <http://msb.im/22KH>
- Night Of Navy 8-1/2" X 11" Cardstock [100867] - Price: \$10.00 - <http://msb.im/22KI>
- More Dazzle 6" X 6" (15.2 X 15.2 Cm) Specialty Paper [161749] - Price: \$7.50 - <http://msb.im/22KJ>
- Basic White Medium Envelopes [159236] - Price: \$8.50 - <http://msb.im/22KK>
- Blending Brushes [153611] - Price: \$13.00 - <http://msb.im/22KL>
- Stampin' Cut & Emboss Machine [149653] - Price: \$128.00 - <http://msb.im/22KM>
- Simply Scored Scoring Tool [122334] - Price: \$36.00 - <http://msb.im/22KN>
- Paper Trimmer [152392] - Price: \$26.00 - <http://msb.im/22KO>
- Paper Snips Scissors [103579] - Price: \$11.00 - <http://msb.im/22KP>
- Stampin' Seal+ [149699] - Price: \$12.00 - <http://msb.im/22KQ>
- Multipurpose Liquid Glue [110755] - Price: \$5.50 - <http://msb.im/22KR>
- Stampin' Dimensionals [104430] - Price: \$4.25 - <http://msb.im/22KS>